

Pike Lake Neighbors, Inc.



2023 Annual Meeting Sept 3, 2023

Agenda

- ▶ Election of Officers and Directors
- ▶ By-Laws and Resolutions
- ▶ Mission
- ▶ Reports
 - ▶ Financial Report
 - ▶ Membership
 - ▶ Inventory
 - ▶ Web and Email Changes
- ▶ Fishery
- ▶ Initiatives
- ▶ Aquatic Invasive Species

Election Nominations

- ▶ President - Steve Kubacki
- ▶ Vice President - Rita Erspamer
- ▶ Secretary - Duane Silkworth
- ▶ Treasurer - Sarah Bourne
- ▶ Director - Steve Anderson
- ▶ Director - Dan Gossen
- ▶ Director - Amanda Kraus
- ▶ Director - Charles Schuler
- ▶ Director - (open)

By-laws Change 1

- ▶ Resolved that Article III - MEMBERSHIP be revised to

Article III - MEMBERSHIP

Section 1 - ELIGIBILITY: Membership eligibility is defined in the adopted Constitution of Pike Lake Neighbors, Inc., which states:

Membership in the Organization shall be open to any individual, that (a) subscribes to the purposes of the Organization, and (b) owns or leases property within one mile of Pike Lake, or (c) resides on or within one mile of Pike Lake at least one month each year, or (d) is the spouse, adult child, parent, sibling, or adult grandchild of an individual described in (b) or (c), ~~and (e) is current on the yearly dues.~~

Section 2 - DUES: Dues shall be ~~\$50~~ paid on a calendar year basis. Dues shall be set by a vote at an annual or special membership meeting to an amount that allows the Organization to meet the requirements of a Wisconsin Qualified Lake Association. A person who meets the eligibility requirement and has paid the current annual dues shall be a full voting member of the Organization.

By-laws Change 2

- ▶ Resolved that Article IX - Miscellaneous Provisions be amended to add
Section 4 - CONTRIBUTIONS

The Organization shall solicit and accept additional contributions to fund specific projects and initiatives as authorized by the Board of Directors.

Resolution 1

Annual dues shall be \$20 per individual member.

Proposed Mission Statement

▶ Mission

- ▶ Preserve and protect the environmental integrity of Pike Lake and the adjoining Turtle River.

▶ Tactics

- ▶ Support members and other Pike Lake people with communication, social get-togethers, and educational events.
- ▶ Work with the guidance and cooperation of the DNR and Iron County.
- ▶ Support Turtle River Volunteers with manpower and other resources to control CLP and other Aquatic Invasive Species.
- ▶ Maintain the pikelakeneighbors.org website to support Pike Lake and Turtle River Volunteers.
- ▶ Support the Pike Lake Pikers Facebook group, for communications and socializing.
- ▶ Maintain a comprehensive contact list of members, other neighbors, and external contacts.

Pike Lakes Neighbors Financial Status September 2023

Current Balance - \$2,481.32

Expected Annual Dues - \$750 - \$1,000

Expected Annual Expenditures - \$ 675+/-

Expected Annual Expenditures

1. Wisconsin Registration Renewal Fees
2. Website Renewal
3. Seine, Rakes, Collection Bags
4. Nets
5. Minor Misc.

Submitted by Steve Kubacki

Membership

- ▶ **Parcels**
 - ▶ 58 Pike Lake (39 with contacts, 19 unresponsive)
 - ▶ 16 Turtle River N (2,14)
 - ▶ 27 Turtle River S (5,22)
- ▶ **Neighbors**
 - ▶ 69 Persons provided contact info
- ▶ **Members**
 - ▶ 35 Members 2021
 - ▶ 22 Members 2022
 - ▶ 15 Members 2023
- ▶ 34 Turtle River Volunteers

Equipment Inventory

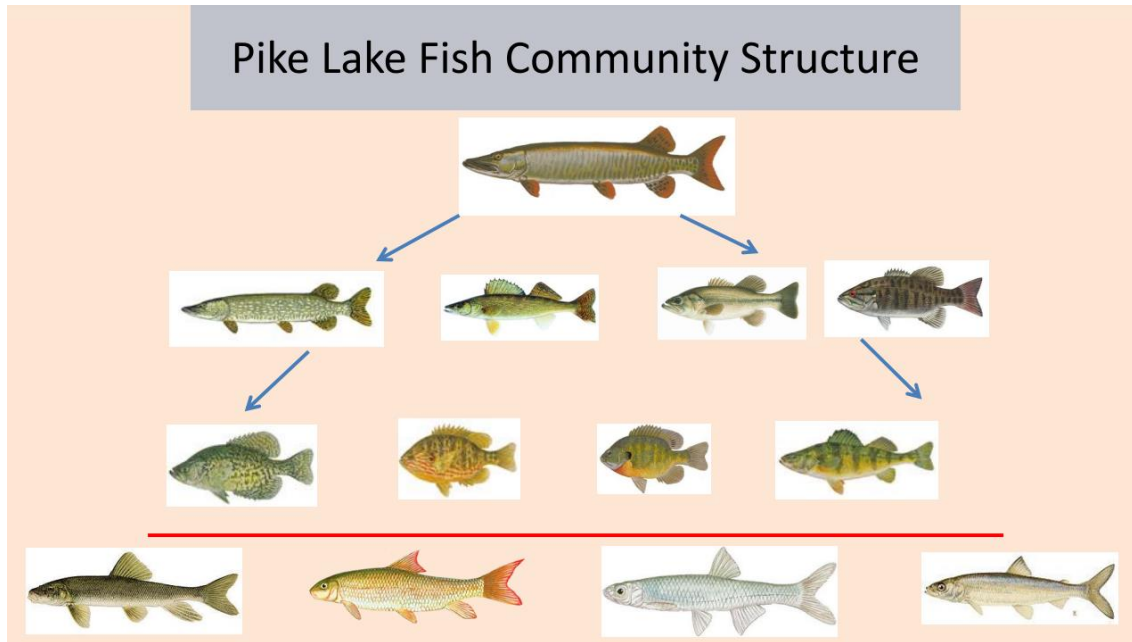
- ▶ Donated
 - ▶ 3 (or 4) Long Handle Rakes
 - ▶ 3 Large Collection Bags
 - ▶ 4 Hand Nets
 - ▶ Bobbers
 - ▶ 3 old Androids for KoboCollect
 - ▶ 3 “Aqua Scope” tubes
- ▶ Acquired
 - ▶ Mesh Bags (DNR grant)
 - ▶ 5 CLP Catch Net Seines (Pike Lake Neighbors)
- ▶ Personal
 - ▶ Canoes, Boats, Wetsuits, Waders, Masks and Snorkels, Rakes

Web and Email Changes

- ▶ Website
 - ▶ Evaluate hosting and funding alternatives
- ▶ Email
 - ▶ Use Google Contacts for email from “Pike Lake Neighbors, Inc.”
 - ▶ pikelakeneighbors.gmail.com
 - ▶ Eliminate email server lists
 - ▶ members@pikelakeneighbors.org
 - ▶ neighbors@pikelakeneighbors.org
 - ▶ Use turtlerivervolunteers@googlegroups.com for CLP activities
 - ▶ Use the Pike Lake Pikers Facebook group
- ▶ Decide whether to eliminate the Directory page from the website.
- ▶ Minimize Postal Mail
 - ▶ except to new property owners

Fishery

- ▶ Hosted a meeting 8/2/2023
 - ▶ Zach Lawson, DNR Fisheries Biologist for Iron and Ashland County.
 - ▶ Slides and Video are posted on the website.



Fishery Summary

- ▶ Pike Lake is unique
 - ▶ Deep and cool with adequate oxygen
 - ▶ Very little shoreline woody habitat
 - ▶ Very little historical data before the boat landing was installed
- ▶ Resilient fish population
 - ▶ Augmented by walleye stocking past 4 years
- ▶ Management Goals
 - ▶ Walleye and Musky with trophy potential, Smallmouth Bass
 - ▶ Maintain Cisco forage base
 - ▶ Discourage Largemouth Bass
 - ▶ Survey on 7 year rotation + opportunistically

Initiatives

- ▶ Turtle River Volunteers
- ▶ Slack
- ▶ Bobbers
- ▶ KoboCollect devices
- ▶ CLP Catch Nets

Turtle River Volunteers

- ▶ The primary communications means to organize our volunteer work
- ▶ Free Google Account
 - ▶ Maintained by Pike Lake, Lake of the Falls, Iron County
 - ▶ Open to anyone
 - ▶ Google Groups email list
 - ▶ turtlerivervolunteers@googlegroups.com
 - ▶ Documents Repository
- ▶ 34 Members from across the watershed
- ▶ To join, send contact information to
 - ▶ turtlerivervolunteers@gmail.com
 - ▶ Or use Sign-up sheet here

Slack

- ▶ A communications tool for teamwork
- ▶ Set up by Jeff Bradley for Pike Lake Neighbors
- ▶ Ad-hoc participants in “Channels”
- ▶ Interactive
- ▶ Notifications
- ▶ Holds threaded discussions together
- ▶ Better than email for many purposes especially short-term back-and-forth discussions

Bobber Program

- ▶ Initiative of Jeff Bradley and Steve Anderson
- ▶ Custom Bobbers
 - ▶ Orange and Yellow
 - ▶ Printed with distinctive message “CLP Invasive Species Marker”
 - ▶ Weighted line
- ▶ Deployed on CLP plants while surveying
- ▶ Marks locations for subsequent CLP pullers

- ▶ Has been very effective

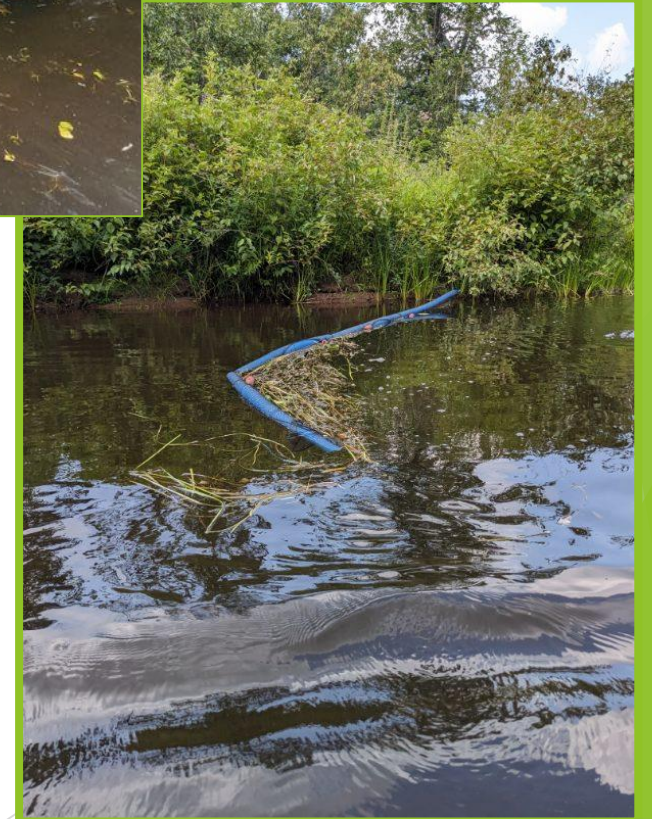
KoboCollect Devices

- ▶ Android smartphone app
 - ▶ Used by Zach's team to collect data on invasive locations
 - ▶ Available to Iron County, Duane S, Steve A, Cindy M, ...
 - ▶ We have 2 more configured devices available
- ▶ Collects
 - ▶ Surveyor
 - ▶ GPS coordinates
 - ▶ Abundance Data (number of plants, etc)
 - ▶ Disposition (pulled?, flagged?)
 - ▶ Notes



CLP Catch Nets

- ▶ 5 Frabil Minnow Seines
 - ▶ 25x4 foot, ¼ inch netting
 - ▶ pool noodles, rebar, small concrete anchors, jugs, polyethylene line, snap clips
- ▶ Used effectively this year
 - ▶ In current, downstream of active raking activity
 - ▶ Rice Lake channel
 - ▶ Turtle River



Curly Leaf Pondweed Control Activity



Rice Lake 2023 Great Pondweed Pull

- ▶ 9 days in early June
- ▶ Kickoff picnic at the Pines
- ▶ Scores of Volunteers
- ▶ 2 Dump Trailer loads per day
- ▶ 1495 bags of CLP
- ▶ 30 Tons of CLP
- ▶ 5.5 million CLP Plants



CLP Activity

- ▶ Steve Anderson, Aquatic Invasive Species Coordinator
- ▶ May 29: first CLP pull at Weber creek
- ▶ June 3: a paddle upstream on the river
 - ▶ small amounts of CLP found across from the boat launch and halfway up the river.
 - ▶ A new patch found in front of Ruggers (halfway between the defunct sign and the boat launch) about 4x5' in area; pulled and hasn't returned (yet).
- ▶ June 4: CLP pulled from the shallow area at the north Weber Creek mouth (two people, two hours)
- ▶ June 6: CLP pulled from the shore by the steep stairs between Mendros and Tiptop.

CLP Scheduled Activity 1

- ▶ June 12-14:
 - ▶ The first major scheduled work days with Zach Wilson and his interns.
 - ▶ All areas of the Turtle River upstream and Pike Lake.
 - ▶ 13 workers
 - ▶ 4 from the county
 - ▶ 4 from Pike Lake
 - ▶ 2 from Lake of the Falls
 - ▶ 1 from Spider Lake
 - ▶ 2 from the Flowage.

CLP Activity

- ▶ June 23:
 - ▶ bobbers dropped in Pike Lake marking new CLP growth and immediate response from volunteers to pull.
- ▶ July 4:
 - ▶ A great turnout to pull CLP on Pike Lake. All major areas were cleared. (We have 7 "hotspots" on the lake now. One has shown no growth of CLP this year.)
- ▶ August 4:
 - ▶ Volunteer work day with 9 volunteers.

CLP Scheduled Activity 2

- ▶ August 7-9:
 - ▶ Zach's Iron County crew
 - ▶ Three workers hired by The Turtle Flambeau Flowage from the Discovery Center.
 - ▶ Turtle River Volunteers
 - ▶ Areas covered
 - ▶ Pike Lake
 - ▶ Upstream on the Turtle River. Two new "hot spots" discovered, one just below the Turtle Rapids and one at the outlet of the River in about 4' of water.
 - ▶ Between the Arrowhead bridge and the rapids Turtle River was the worst we've seen. That stretch required one day of work in June. In August, two days, August 8 and 9, were not enough. A single volunteer went back the next week to continue unworked areas and brought out 4 large bags from one hotspot on the river. There is still more remaining there as of today.

CLP Activity

- ▶ August 25: Three Pike Lake volunteers worked on the north Weber Creek outlet for four hours. More remains to be pulled.
- ▶ More Activity TBD

Other Hotspots

- ▶ **Downstream!**
 - ▶ This is being under-reported. It's highly significant.
 - ▶ Dan Gossen, Cindy Moriarty and Di Schuett (Lake of Falls) have been surveying and pulling new CLP hotspots on the Turtle River Downstream from Pike Lake. This represents a disturbing new spread.
 - ▶ I've been wanting to survey the downstream areas but haven't been able to yet.

CLP Summary

- ▶ Major areas of concern
 - ▶ Weber Creek
 - ▶ Turtle River both upstream and downstream.
- ▶ Encouraging signs
 - ▶ There's been successful reduction of CLP at several of the Pike Lake hotspots, one of which has been devoid of CLP all summer.
- ▶ Places to Monitor
 - ▶ Special attention needs to be paid to the mouth of the river near Ruggers. Two new places have emerged and we can't let this get out of control.
 - ▶ Weber Creek has been worse this year than last.
 - ▶ Downstream needs monitoring, marking, and pulling.

CLP Suggested Strategy

- ▶ We need to continue to monitor all Pike Lake "hotspots".
 - ▶ Please ask for bobber markers if you can make use of them.
- ▶ Try to schedule three pulls with Zach Wilson and his crew for next year (this year there were only two). Middle of June, Middle of July and Middle of August are suggested.
- ▶ Continued work by volunteers between the scheduled pulls to reduce CLP in the hotspots (Pulling three times a summer will not do it.)
- ▶ Monitor and develop pulling schedules for the river downstream.
- ▶ Judicial deployment of nets in the river during active pulling.
- ▶ Recruit more volunteers.

- ▶ If I have forgotten to mention something or someone, I am sorry! We have had a great volunteer response this summer. The best we have ever had and it's been both needed and appreciated!

Yellow Flag Iris

- ▶ June 27:
 - ▶ A reminder from Zach Wilson that we also need to pay attention to the Yellow Flag Iris
- ▶ On the West Shore
- ▶ Asked for permissions to remove Iris from private shores.
- ▶ Some was removed by Erspamers, Kubackis
- ▶ Still need to remove more next year.
- ▶ Look for it when blooming in late June

- ★ Crowds out native plant species
- ★ Forms dense clumps that alter wildlife habitat and biodiversity.
- ★ Escapes gardens and ponds
- ★ Its sap can cause skin irritation.



Yellow Flag Iris

Removal:

- Wearing gloves and long sleeves, **dig out plant** ensuring rhizomes are removed.
- Or at least **cut flower heads** to prevent seed spread.



Aquatic Invasive Species

- ◆ When not flowering, yellow flag iris might be confused with the native blue flag iris. Blue flag iris has a blue flower.



Aquatic Forget-Me-Not

- ▶ Flowers are small, sky-blue, 5 petals, yellow center
- ▶ Two Plants were removed
- ▶ More probably exist at various places on the lake



Pike Lake Neighbors 2023 Annual Meeting

► Thanks for Attending!

